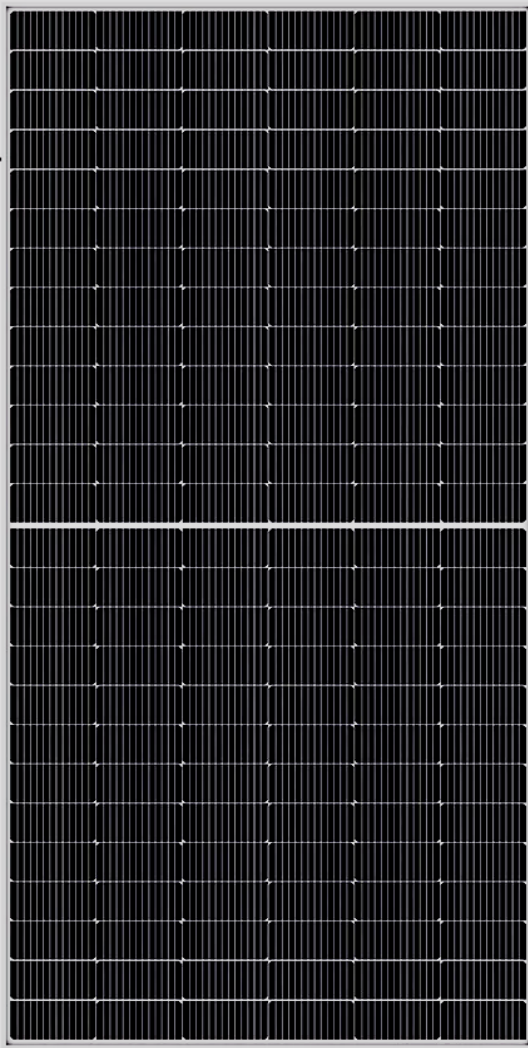




SS-M-435 to 455 Series



Quality Product

All Manufactured modules are tested 100% by EL (Electroluminescence) during the Production Process & Free from micro cracks.

Our high-performance modules are highly efficient, reliable and provide optimal output.

The company manufactures solar modules in compliance with global standard including IEC 61215, 61730-1, 61730-2, 61701, UL 1703, UL 61730, CSAUS, ISO 9001:2008 & ISO 14001:2004 & 18001:2007.

High Efficiency .

High Module efficiency is obtaining top performance even in diffused light conditions.

We are leaders in providing our customers with maximum sunlight conversion.

Application Possibilities

Residential and Commercial rooftops, Car ports, Solar Farming, Balconies, Awnings, Street lights, Fences, and Canopies.

Our Team

We have a team of qualified experts and engineers making sure that modules produce maximum power. We pride ourselves in caring for each individual customer needs with detailed attention. Our end goal is to give a highly efficient product with exceptional customer service.

Guarantee

Our product is durable and has 30 years performance warranty. Integrated manufacturing of cells & modules in production line guarantees optimum performance.

US OFFICE:

Sungen Power
111 Charlotte Place Suite 101A
Englewood Cliffs, NJ 07632
Office Tel: 201-568-1424





SS-M-435 to 455 Series

Electric Performance Parameter

Model	SS-M-435	SS-M-440	SS-M-455
Nominal Maximum Power (Pmax/W)	435	440	455
Optimum Operating Voltage (Vmp/V)	45.3	45.6	45.8
Optimum Operating Current (Imp/A)	9.61	9.65	9.72
Open Circuit Voltage (Voc/V)	52.9	53.1	53.7
Short Circuit Current (Isc/A)	10.3	10.37	10.54

* Measurement Power Tolerance on Power 0 / +%

* Under Standard Test Conditions (STC) of irradiance of 1000W/m²

* Maximum System Voltage: 1500v IEC/UL

* Normal Operating cell Temperature (NOCT) of irradiance of 800W/m², 43± 2° C

* Spectrum AM 1.5 and cell temperature of 25 °C

Mechanical Parameter

Module Dimensions	2172 X 1002 X 40 mm / 85.51 X 39.45 X 1.57 inch
Weight	24.8 kgs / 54.67lbs
Cell Size (Monocrystalline)	158.75x79.375 mm / 6.25x3.125 in
No Of Cell	156 (6 X 26)
Junction Box	IP68 with Bypass diodes
Solar Cable Length (4mm ²)	1200mm (47.24inch)
Connectors	QC4/MC4 compatible or IP68 rated
Glass (Tempered & Low Iron ARC)	3.2mm (0.125in)
Encapsulate	EVA
Back Cover	Composite Sheet
Frame	Anodized Aluminum Alloy

Temperature Coefficient

Coefficient of Current	+0.05% /°C
Coefficient of Voltage	-0.29% /°C
Coefficient of Power	-0.37% /°C

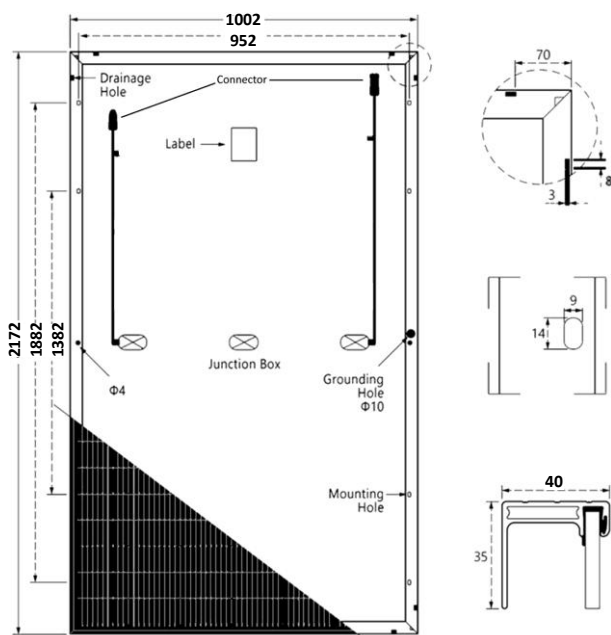
Tested Operating Conditions

Temperature Cycling Range	-40°C to 85°C
Humidity Freeze, Damp Heat	85% RH

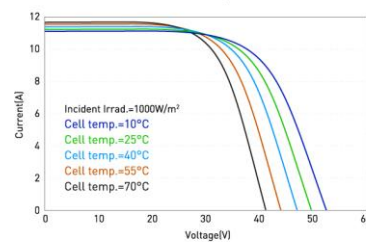
Product Warranty

Product Warranty	15 Years
Performance Warranty	First 10 Years up to 90%, next 20 years up to 80%

Module Drawing



I-V Curve at Different Temperature



I-V/P-V Curve at Different Irradiation

